

STELLAR ONE

Phase - III

Where Trust, Quality and Location Converge

3 BHK APARTMENTS



LANDSCAPE PLAN

PHASE III

(A, B, C - APARTMENT BLOCKS)

UPRERAPRJ564504/08/2024

PHASE II

(L, M, N, P - APARTMENT BLOCKS)

UNDER CONSTRUCTION

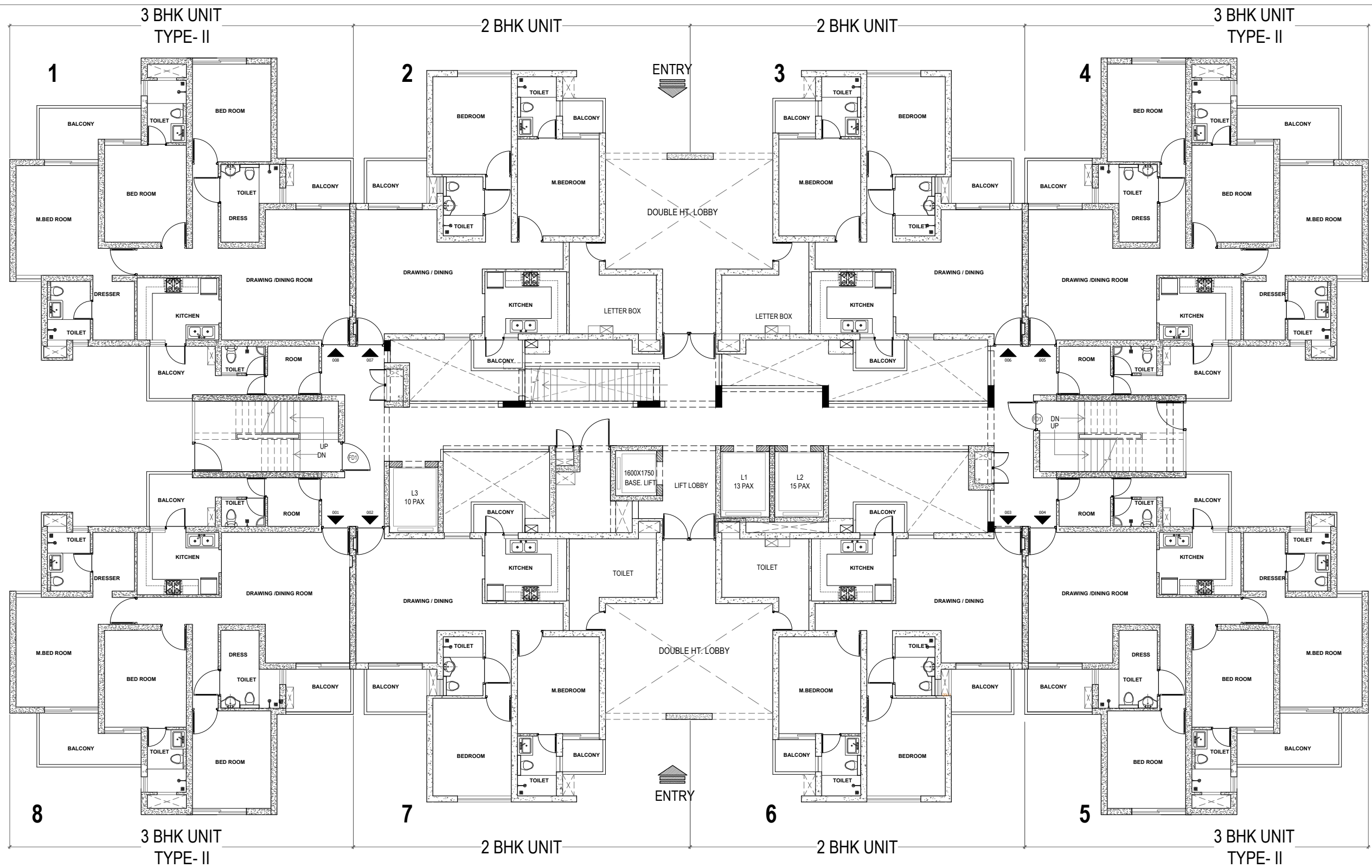
UPRERAPRJ923780

LEGEND

- | | | | | |
|--------------------------|------------------------|-------------------------|-----------------------------------|---------------------|
| 1 ENTRY PLAZA | 9 CLUB HOUSE | 10 MEDITATION/YOGA AREA | 18 OPEN GYM | 25 CSC BLOCK |
| 2 PLAY LAWN | - GYM | 11 GREEN MAZE | 19 RAIN DANCE AREA | - PLAY SCHOOL |
| 3 PARTY LAWN | - BANQUET HALL | 12 SITTING AREA | 20 CHANGING ROOMS | - CONVENIENCE SHOPS |
| 4 JOGGING TRACK | - BILLIARD'S ROOM | 13 KIDS PLAY AREA | 21 TRANSFORMER YARD | - LIBRARY |
| 5 TENNIS COURT | - CHILDREN'S PLAY ZONE | 14 SKATING RINK | 22 DG YARD | - BANQUET HALL |
| 6 BADMINTON COURTS | - CARD ROOM | 15 BASKETBALL COURT | 23 SCHOOL BUS SHELTER | |
| 7 CRICKET PRACTICE PITCH | - TERRACE CAFE | 16 SWIMMING POOL | 24 PEDESTRIAN - ONLY WALKING PATH | |
| 8 HERB GARDEN | - TT ROOM | 17 KIDS SWIMMING POOL | | |
| | - ZUMBA/DANCE STUDIO | | | |

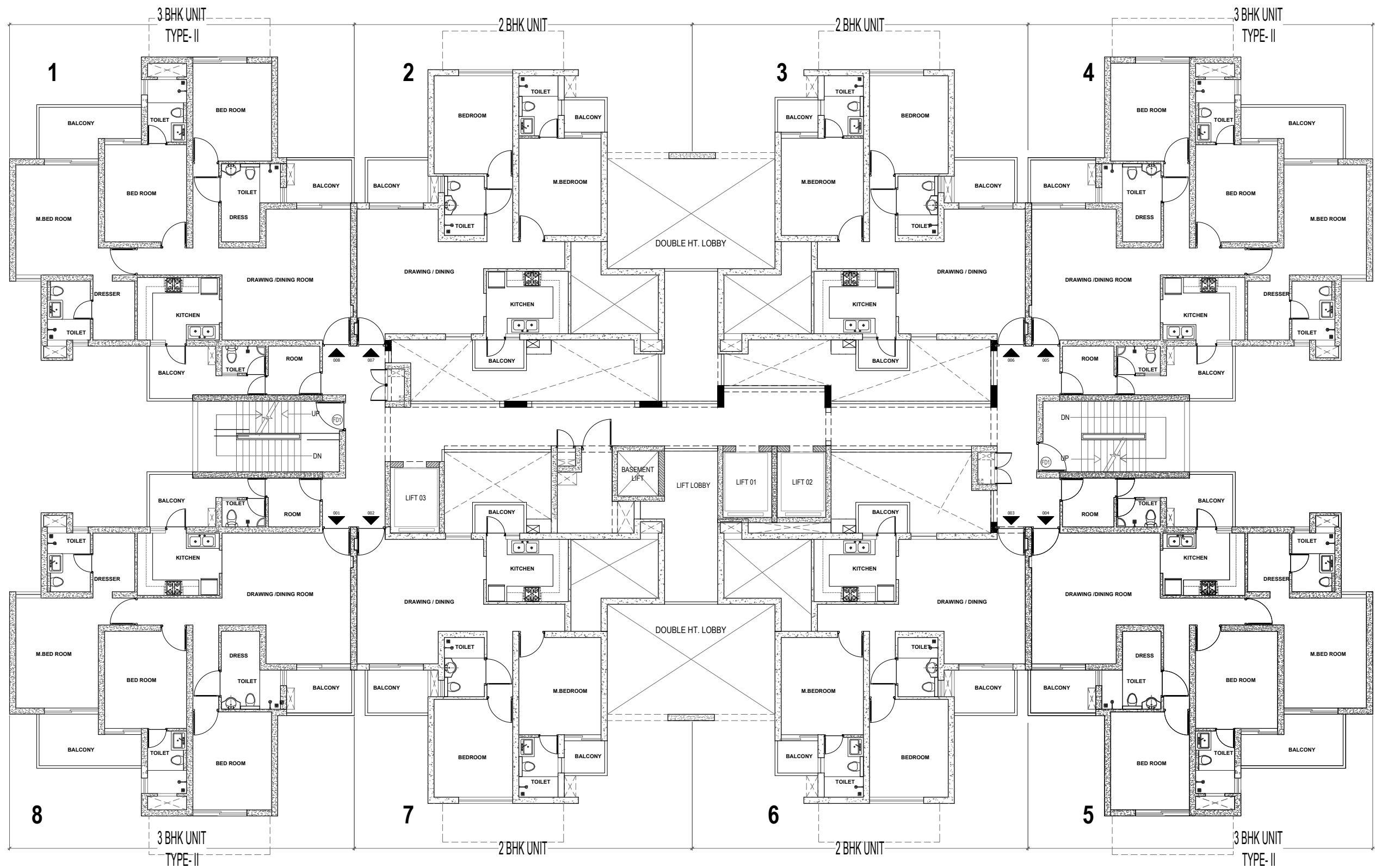


Project Location : GH-09, Sector-1, Greater Noida West



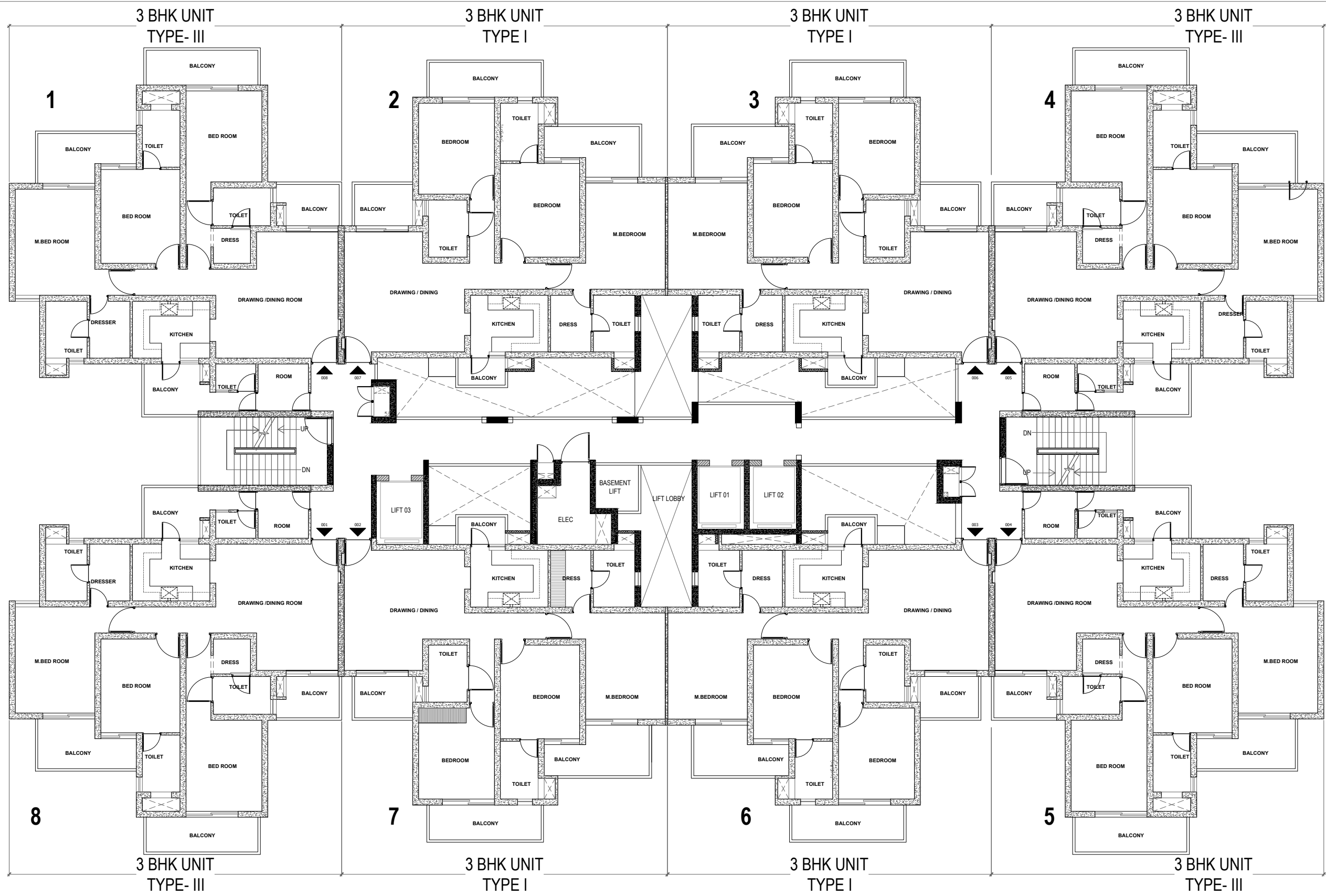
CLUSTER PLAN BLOCK A, B & C (GROUND FLOOR)





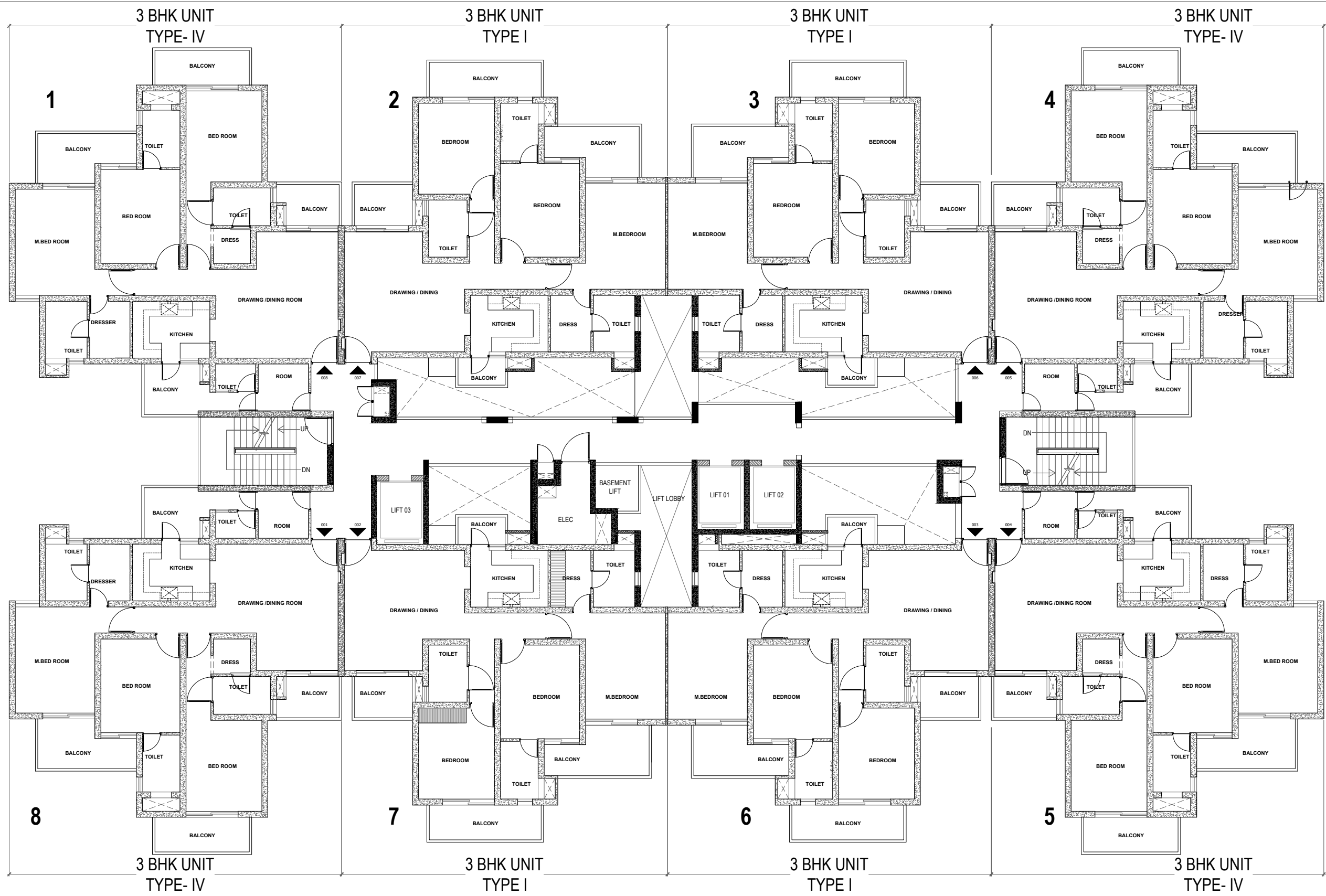
CLUSTER PLAN BLOCK A, B & C (FIRST FLOOR)





CLUSTER PLAN BLOCK A, B & C (2ND TO 14TH FLOOR)

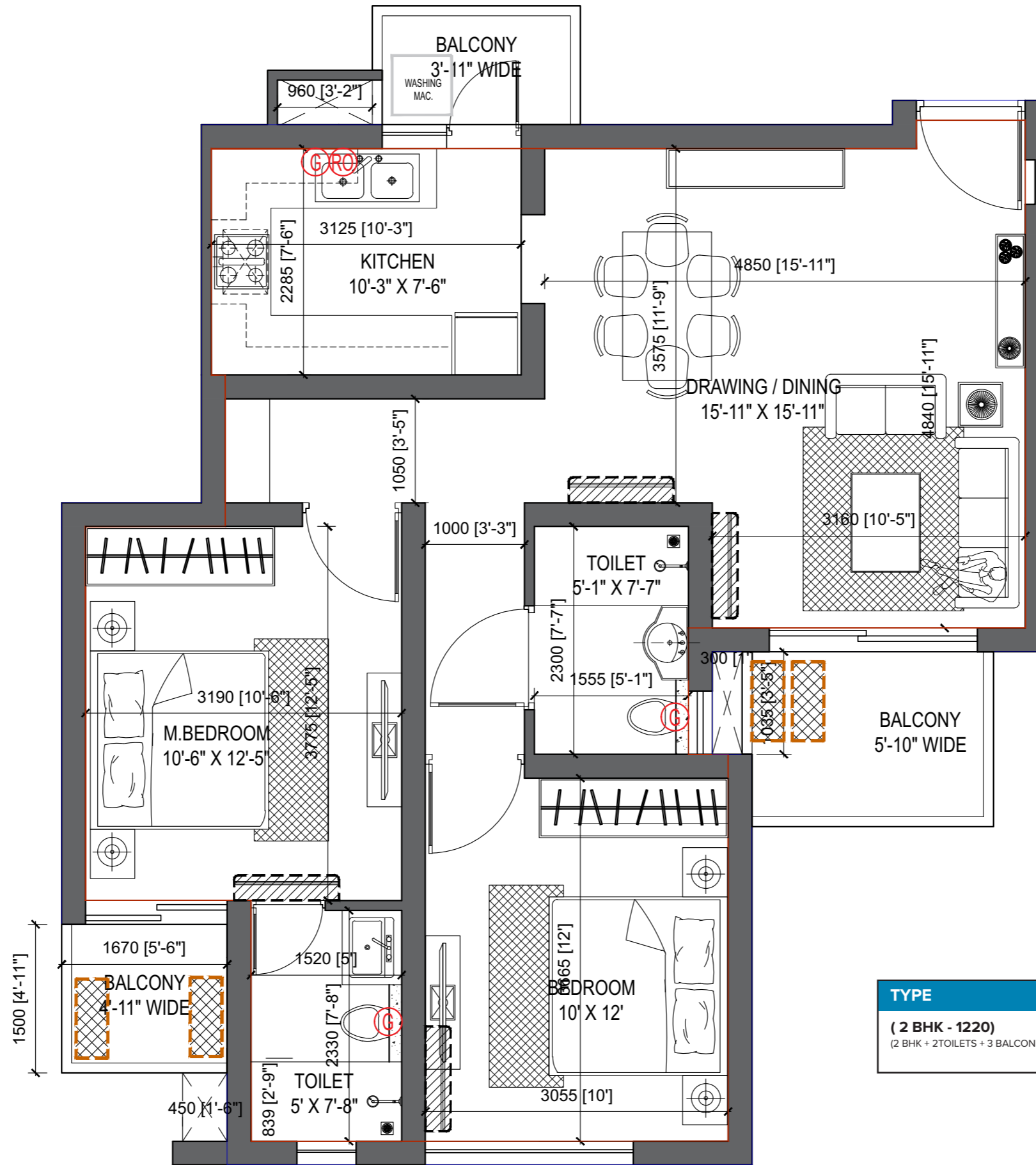




CLUSTER PLAN BLOCK A, B & C (15TH TO 18TH FLOOR)



2 BHK



TYPE	CARPET AREA	BALCONY AREA
(2 BHK - 1220) (2 BHK + 2 TOILETS + 3 BALCONIES)	70.18 SQ.M.	9.37 SQ.M.

3 BHK TYPE - I



TYPE	CARPET AREA	BALCONY AREA
(3 BHK - I 1800) (3 BHK + 3 TOILETS + 3 BALCONIES + 1 UTILITY BALCONY)	95.61 SQ.M.	21.65 SQ.M.

3 BHK TYPE -III



TYPE	CARPET AREA	BALCONY AREA
(3 BHK- III 2020) (3 BHK + 3 TOILETS + 3 BALCONIES + 1 UTILITY BALCONY + 1 ROOM WITH TOILET)	108.07 SQ.M.	23.94 SQ.M.



Every necessity

conveniently accessible

YOUR BRIDGE TO NOIDA

Situated in the highly sought-after Sector-1 of Greater Noida (West), Stellar One proudly showcases thriving social infrastructure in its proximity and provides superb connectivity to the major landmarks. The project is well connected to the FNG Expressway, Central Noida, & Parichowkh.

APPROXIMATE DISTANCES :

- NOIDA - 2KM
- NH-24 - 8KM
- GAUR CITY MALL - 6KM
- YATHARTH HOSPITAL - 1.4KM
- NOIDA CITY CENTER - 11KM
- METRO STATION - 11KM
- PARI CHOWK - 17KM

UPRERAPRJ564504/08/2024



www.up-rera.in



SCAN TO GET GOOGLE LOCATION